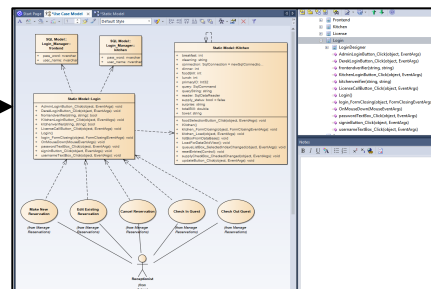
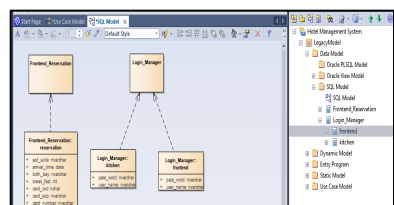
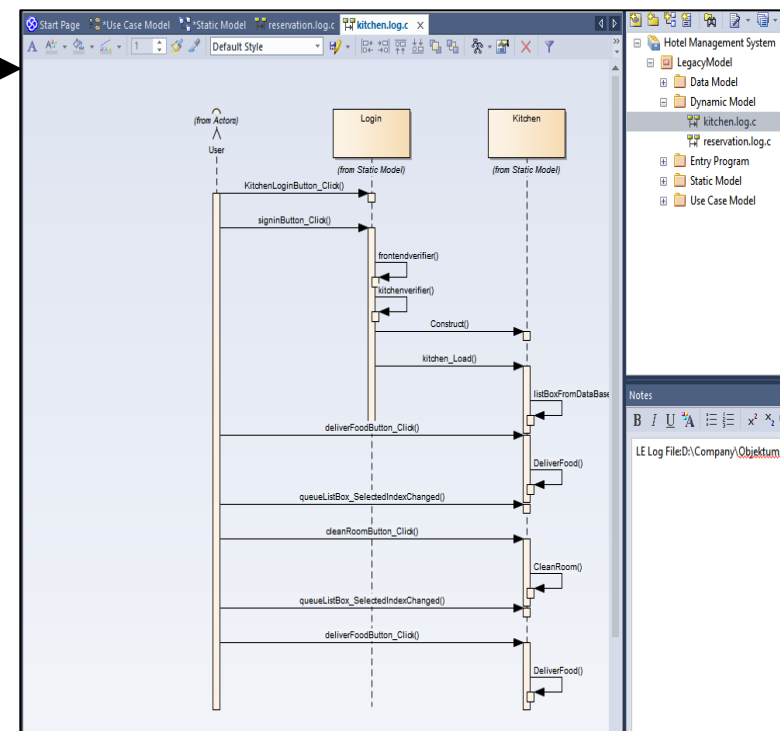


2



Generate static model



Source code

```
1 | 1:00:00:0001 | Enter | Login.KitchenLoginbutton_Click (Inst_1) [frmLogin.cs] (105) |  
2 | 1:00:00:0001 | Exit | Login.KitchenLoginbutton_Click (Inst_1) [frmLogin.cs] (106) |  
3 | 1:00:00:0001 | Enter | Login.signButton_Click (Inst_2) [frmLogin.cs] (111) |  
4 | 1:00:00:0001 | Enter | Login.frontendverifier (Inst_1) [frmLogin.cs] (105) |  
5 | 1:00:00:0001 | Exit | Login.frontendverifier (Inst_1) [frmLogin.cs] (106) |  
6 | 1:00:00:0001 | Enter | Login.kitchenverifier (Inst_1) [frmLogin.cs] (106) |  
7 | 1:00:00:0001 | Exit | Login.kitchenverifier (Inst_1) [frmLogin.cs] (107) |  
8 | 1:00:00:0001 | Enter | Kitchen.kitchen (Inst_2) [frmKitchen.cs] (111) |  
9 | 1:00:00:0001 | Exit | Kitchen.kitchen (Inst_2) [frmKitchen.cs] (112) |  
10 | 1:00:00:0001 | Enter | Kitchen.kitchen_Load (Inst_2) [frmKitchen.cs] (110) |  
11 | 1:00:00:0001 | Enter | Kitchen.LoadForDataGridView (Inst_2) [frmKitchen.cs] (63) |  
12 | 1:00:00:0001 | Exit | Kitchen.LoadForDataGridView (Inst_2) [frmKitchen.cs] (74) |  
13 | 1:00:00:0001 | Enter | Kitchen.listBoxFromDatabase (Inst_2) [frmKitchen.cs] (54) |  
14 | 1:00:00:0001 | Exit | Kitchen.listBoxFromDatabase (Inst_2) [frmKitchen.cs] (115) |  
15 | 1:00:00:0001 | Exit | Kitchen.kitchen_Load (Inst_2) [frmKitchen.cs] (61) |  
16 | 1:00:00:0001 | Exit | Login.signButton_Click (Inst_2) [frmLogin.cs] (111) |  
17 | 1:00:00:0001 | Enter | Kitchen.deliverFoodButton_Click (Inst_2) [frmKitchen.cs] (130) |  
18 | 1:00:00:0001 | Enter | Kitchen.DeliverFood (Inst_2) [frmKitchen.cs] (114) |  
19 | 1:00:00:0001 | Exit | Kitchen.DeliverFood (Inst_2) [frmKitchen.cs] (115) |  
20 | 1:00:00:0001 | Exit | Kitchen.deliverFoodButton_Click (Inst_2) [frmKitchen.cs] (134) |  
21 | 1:00:00:0001 | Enter | Kitchen.queueListBox_SelectedIndexChanged (Inst_2) [frmKitchen.cs] (133) |  
22 | 1:00:00:0001 | Enter | Kitchen.resetEntries (Inst_2) [frmKitchen.cs] (71) |  
23 | 1:00:00:0001 | Enter | Kitchen.resetEntries (Inst_2) [frmKitchen.cs] (71) |  
24 | 1:00:00:0001 | Exit | Kitchen.resetEntries (Inst_2) [frmKitchen.cs] (71) |  
25 | 1:00:00:0001 | Enter | Kitchen.resetEntries (Inst_2) [frmKitchen.cs] (71) |  
26 | 1:00:00:0001 | Exit | Kitchen.resetEntries (Inst_2) [frmKitchen.cs] (71) |  
27 | 1:00:00:0001 | Enter | Kitchen.resetEntries (Inst_2) [frmKitchen.cs] (71) |  
28 | 1:00:00:0001 | Exit | Kitchen.resetEntries (Inst_2) [frmKitchen.cs] (71) |  
29 | 1:00:00:0001 | Enter | Kitchen.resetEntries (Inst_2) [frmKitchen.cs] (71) |  
30 | 1:00:00:0001 | Exit | Kitchen.resetEntries (Inst_2) [frmKitchen.cs] (71) |  
31 | 1:00:00:0001 | Enter | Kitchen.resetEntries (Inst_2) [frmKitchen.cs] (71) |
```

Simulated execution logging

Generate dynamic model